

Hazel Blomkamp

Telephone: +2782 9589 238

Website: www.hazelblomkamp.com

E-mail: info@hazelblomkamp.com or

blomkamp.hazel@gmail.com

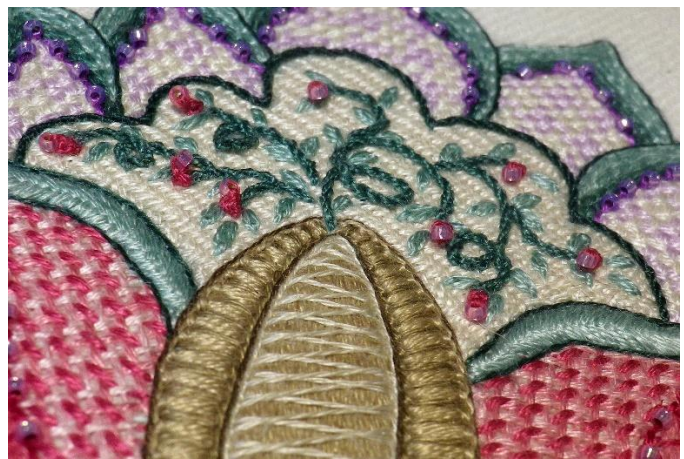
4-Online Live Session Workshop: Almost Autumn



Measuring 300 x 160 mm (11¾ x 6⅓ inches) the Almost Autumn spray of flowers and berries has been designed as a quilt block. The original has been embroidered through polyester batting, but participants can choose whether they wish to do that or not because it can also be framed or made up as a bag. It will be taught online in 4 x 4-hour live sessions. In both instances, there will be ongoing online access to the stitches and techniques after the event. This project is worked with conventional surface embroidery stitches and a variety of interesting needle work techniques that have been modified for use as embroidery stitches.

Stitches and Techniques covered in this workshop:

<u>Embroidery Stitches</u> Backstitch Backstitch – Whipped Blanket & Buttonhole Stitch - Basic Chain Stitch Chain Stitch - Detached Fly Stitch Fly Stitch – Striped Variation Fly Stitch – Whipped French Knot – Multiple Wraps Herringbone Stitch - Interlaced Herringbone Stitch – Raised Long And Short Stitch Shading	Outline Stitch Outline Stitch Padding Split/Chain Stitch Combination Split Stitch Split Stitch Trellis Couching – Basic Trellis Couching – Woven Twisted Couching Up & Down Buttonhole Stitch Padded Basic Double Striped	<u>Needle Lace Stitches</u> Almost Autumn Filler <u>Needle Weaving Patterns</u> Checks and Stripes no. 8 Texture no. 5 <u>Bead Embroidery Stitches</u> Beaded Backstitch Beaded Drizzle Stitch
--	--	--



Project Description:

The project is worked on a heavy weight Ecrú-coloured cotton twill.

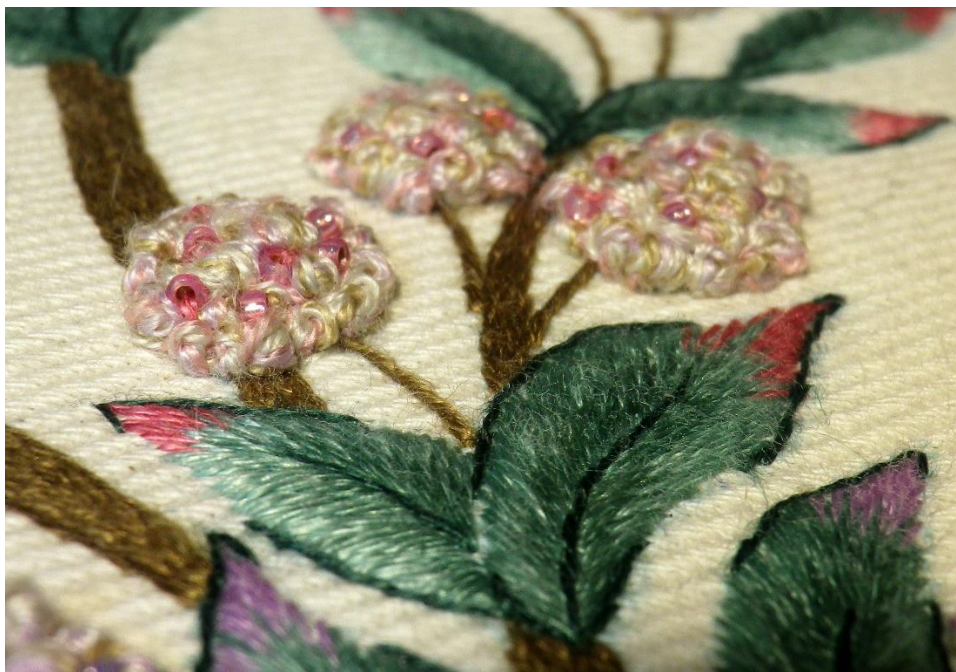
Step by step instructions, along with colour images, diagrams and stitch guidelines are provided in the instruction booklet that accompanies the full kit. Classwork will be done on a doodle cloth with additional threads and beads. High resolution video clips for all the stitches and techniques that are taught in the workshop will be provided in the online private domain so that participants will be able to reference them after the event.

Kit Description:

The project kit contains everything that students will need to complete the embroidery panel, as under.

- Print on a heavy weight Ecrú-coloured cotton twill backed with cotton voile and overlocked around the edges
- Full instruction booklet
- Threads
 - 25 skeins DMC stranded cotton
 - 4 bobbins DMC Perle #12 cotton
- Miyuki Beads
 - 2 x 2-gram packs size 15°
- Needle Pack

In addition to the full kit, participants will be provided with a teaching kit.



Duration: 4 x 4-hour live sessions online with ongoing access to the online tuition page for this workshop.

Level of Skill: Intermediate to Advanced

Student Requirements:

- 6" hoop (for class work)
- 16 x 10" stretcher bars, or similar sized frame (for the project)
- sharp scissors
- good spectacles or additional magnification, if required.